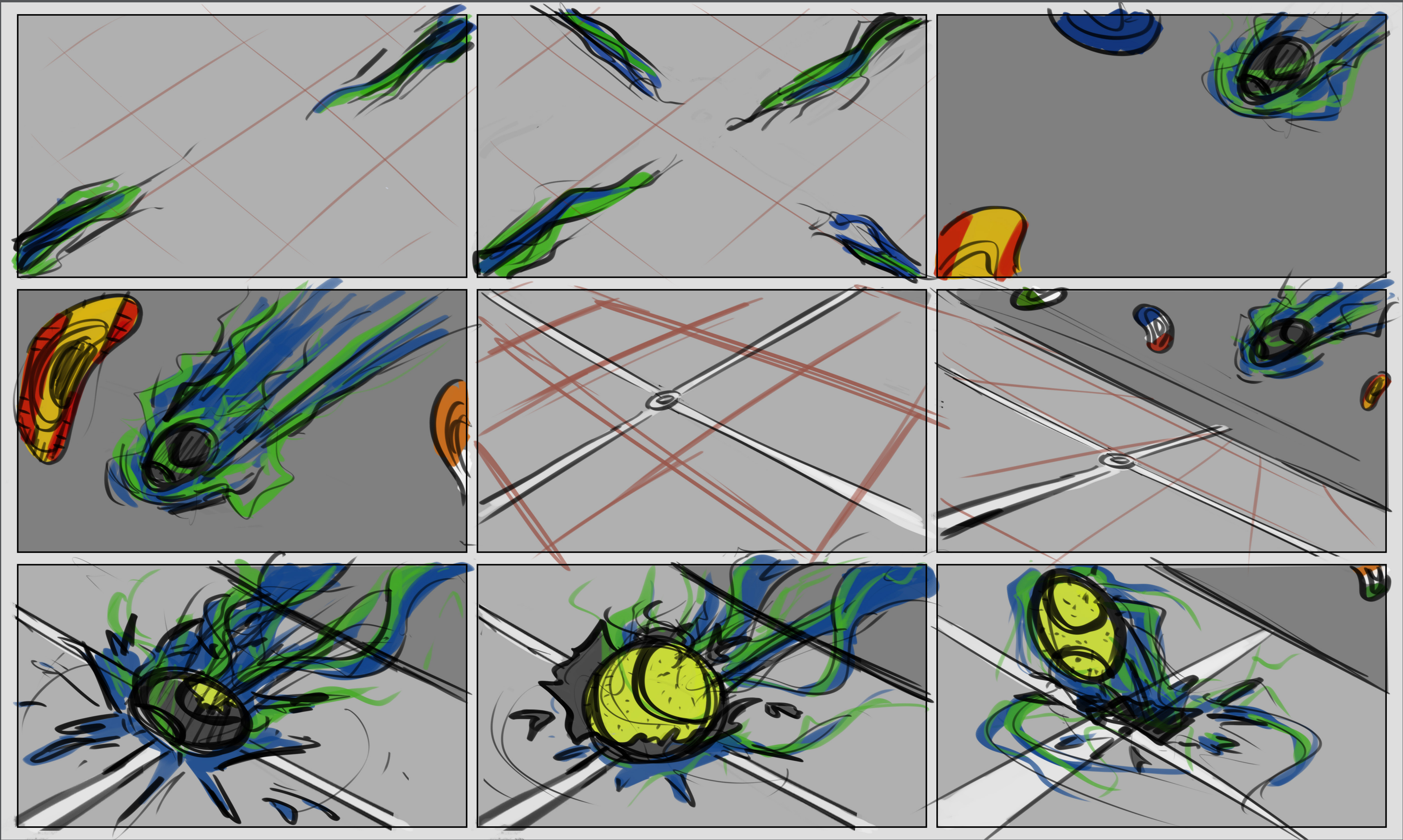




GIRRAPHC

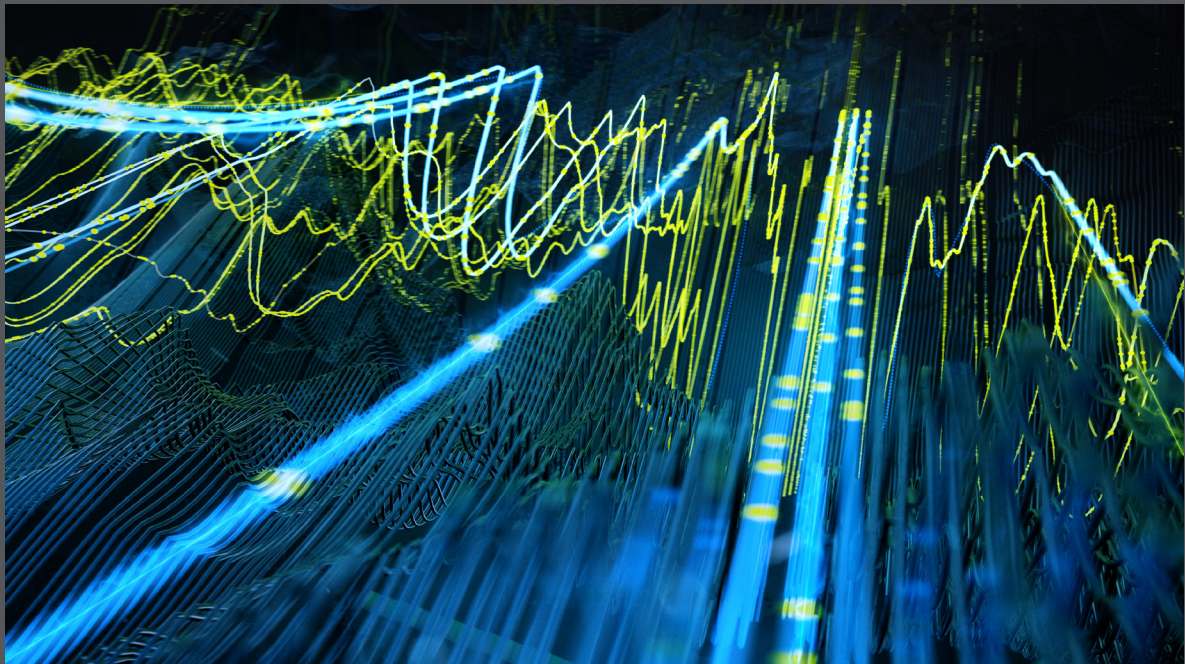
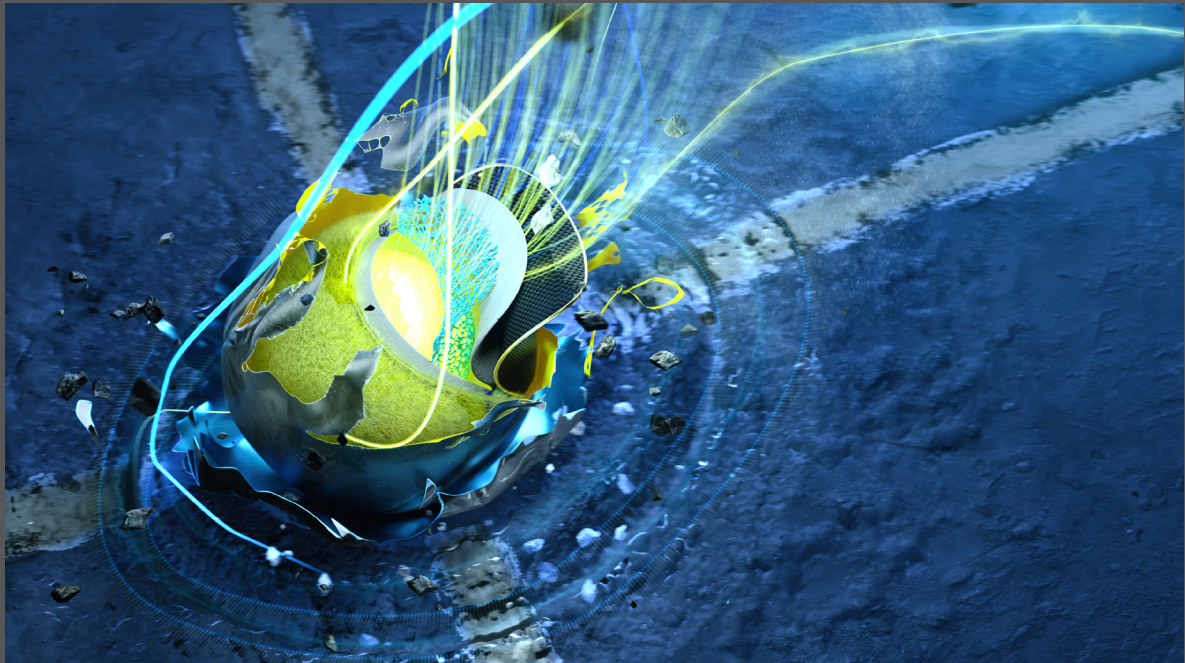
OPENER STORY BOARD

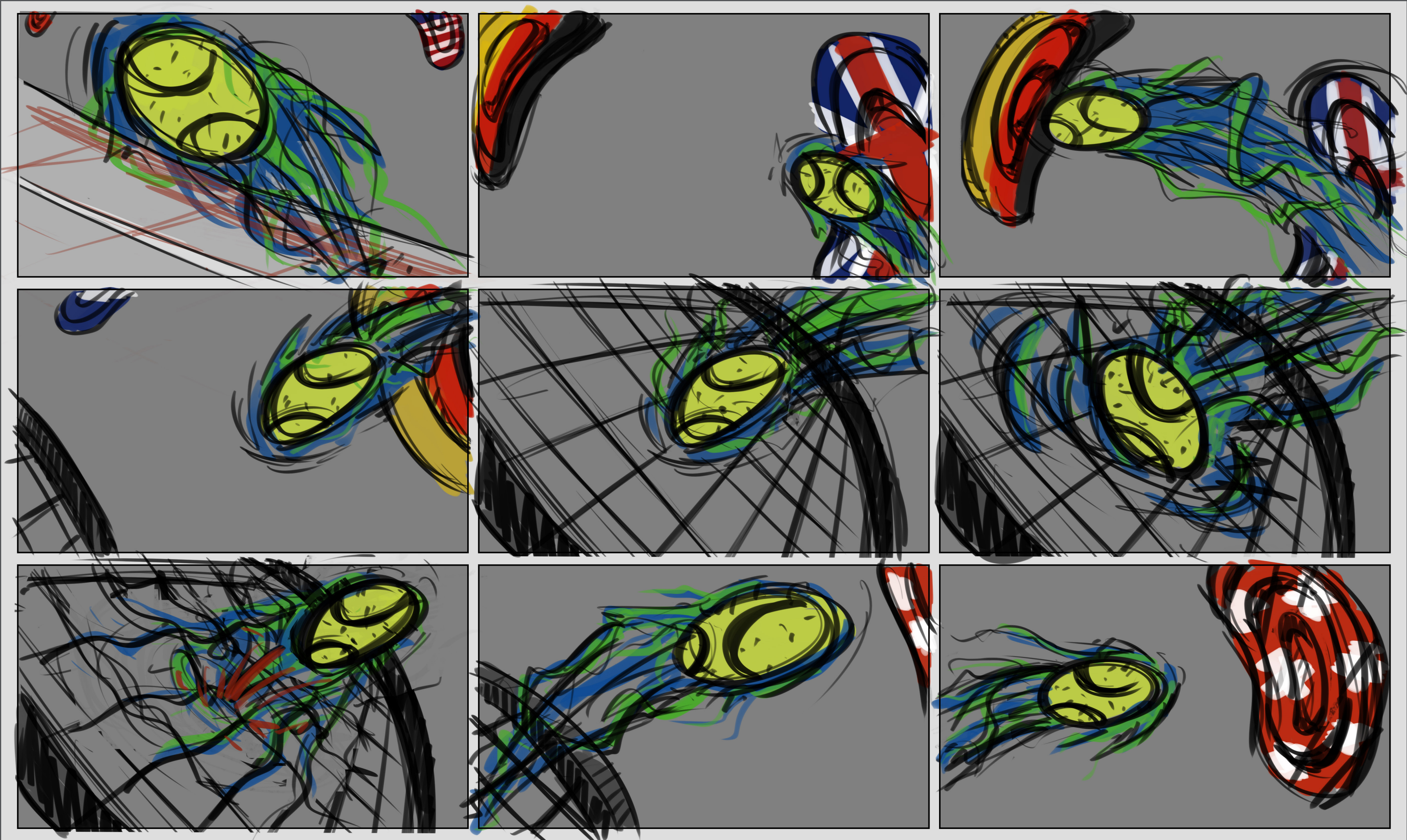
FOR REVIEW



The opener starts with glowing lines traveling on the floor with high energy, forming the lines of the court. When the lines intersect, a black ball comes crashing down into the court. At this point, the ball then opens up and reveals the light green tennis ball inside, filled with energy. Then the ball will bounce to another location to continue the action.

REFERENCES FROM ORIGINAL 3D STILLS



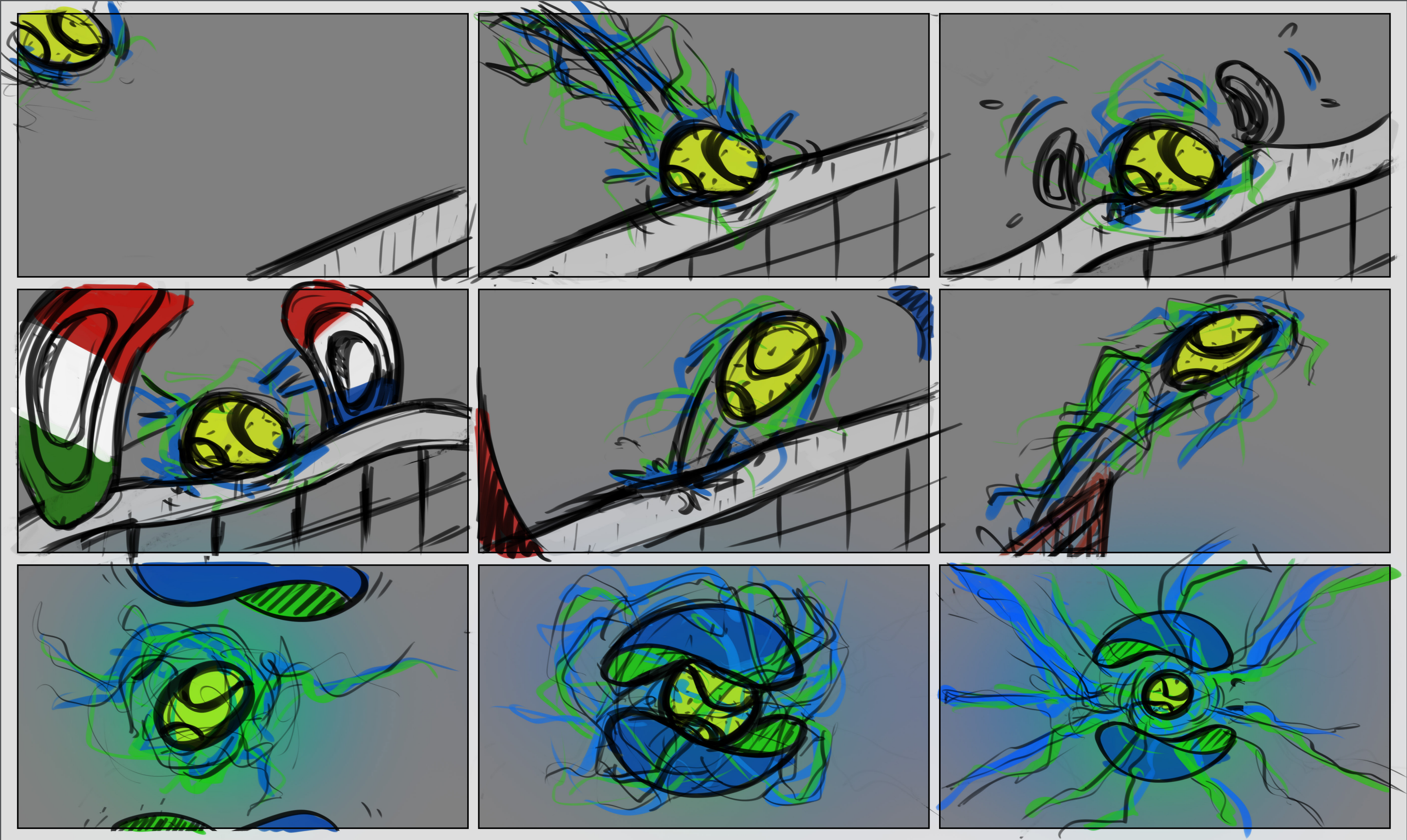


High impact shots, quick movements.

The ball is flying throughout the flag hemisphere shapes. Different flags will be shown. The ball is then hit with the racket, where we will have an epic slow motion moment with the outside of the ball peeling off and radiating out more energy.

REFERENCES FROM ORIGINAL 3D STILLS

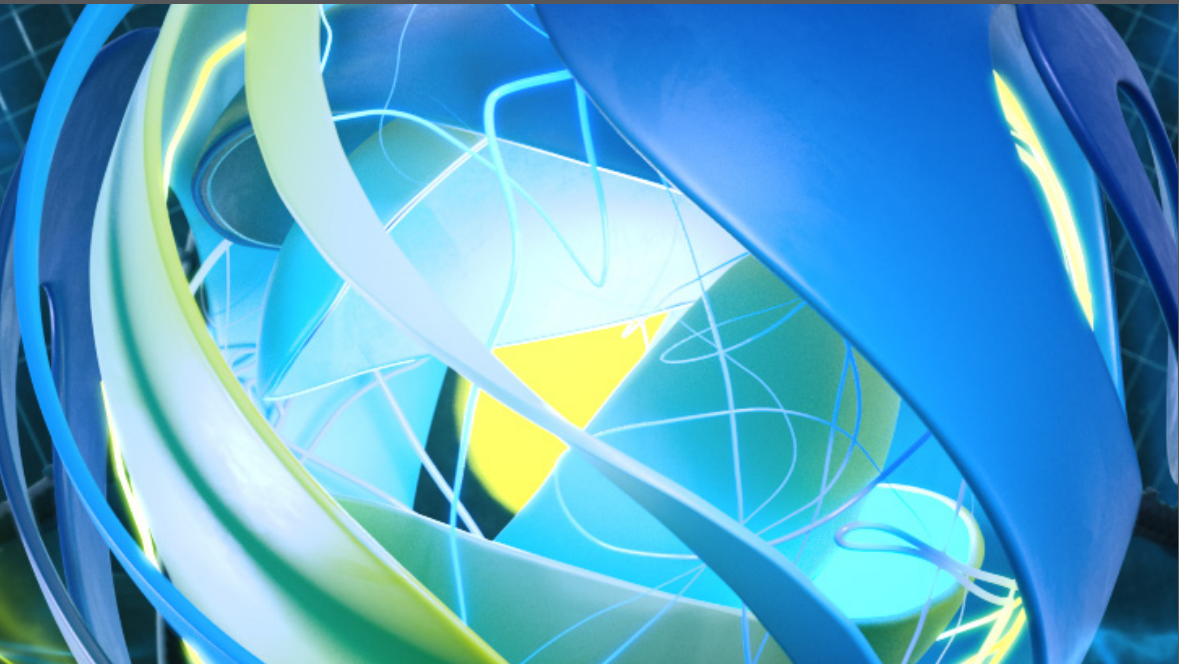
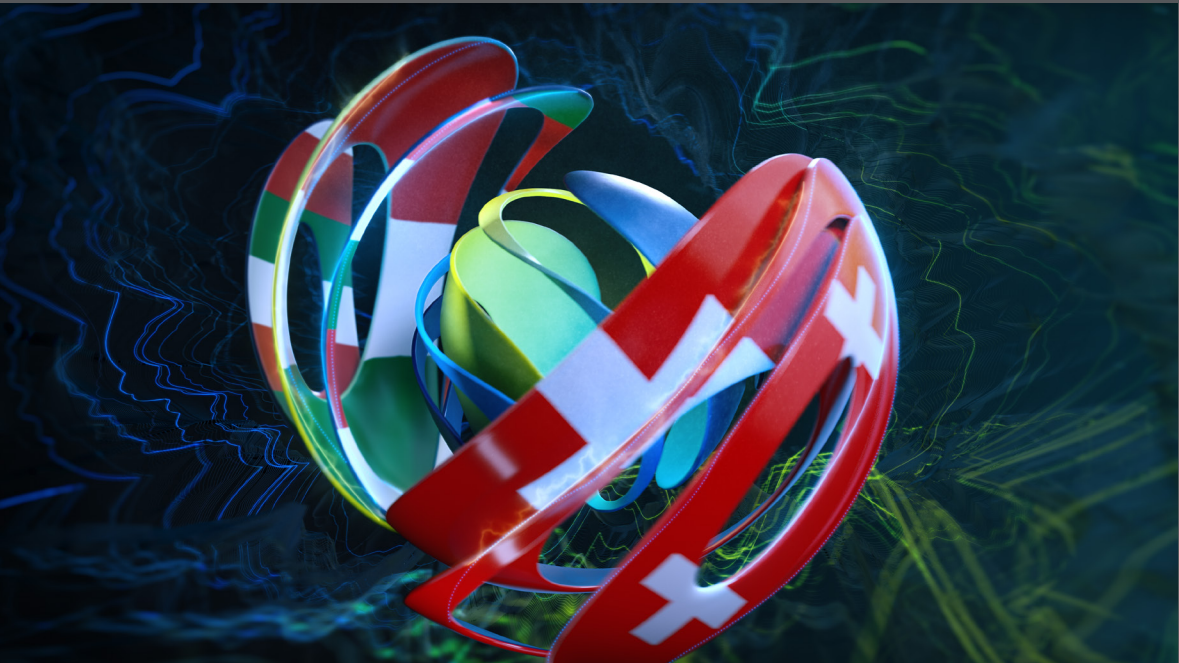


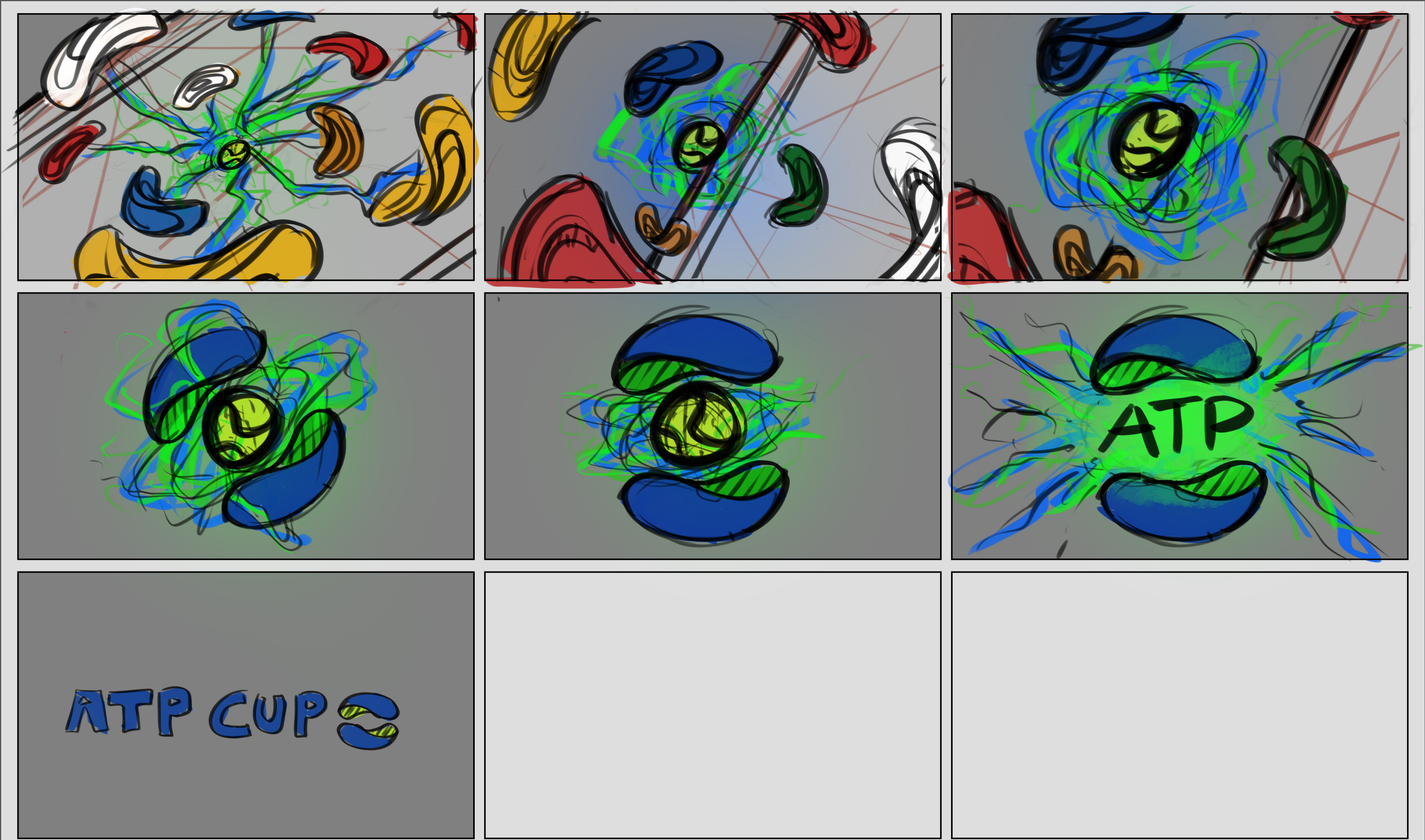


The ball will hit the net in slow motion.

As the ball hits the net it will attract the hemispheres and energy to fly into the shot and surround the ball, becoming compact and charged with more energy.

REFERENCES FROM ORIGINAL 3D STILL





The compact, energy charged ball will explode revealing multiple country flags flying out. This will be the hero shot of the opener.

Then an implosion will reveal the ATP CUP logo for the final shot.

GENERAL COMMENTS:

This opener will have lots of action and high energy moments as well as epic slow motion shots.

The country flags are going to be present across the opener as well as the energy lines following the tennis ball.

We won't be using the tennis racket as a whole; we will only partially see the strings of the racket when the ball hits it.

We decided to keep this opener more abstract and made the tennis ball the main element as it triggers all actions.



🖱️ www.girraphic.com